

**CRIZMAC** presents...

## Desert Divas Influential Women in Southwestern Art

Santa Fe and Taos, New Mexico

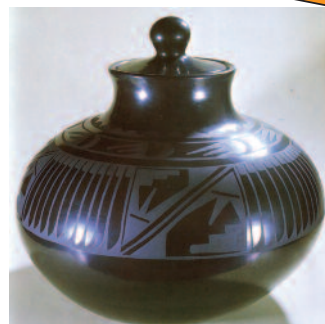
June 25- July 1, 2010 • 7 Days • 9 Meals

The light and vast expanses of the high New Mexican desert have long inspired artists, including many remarkable women—both past and present. From the spectacular black pottery of Maria Martinez to the brilliant canvasses of Georgia O’Keeffe, and the contemporary sculptures of Roxanne Swentzell, their works have had a profound impact on the art world. Other innovative women such as Mabel Dodge Luhan, Millicent Rogers and Mary Cabot Wheelwright were at the artistic forefront, making important contributions through their dedicated efforts to nurture and support artists. Join CRIZMAC’s Stevie Mack and Kitty Williams as we explore the fascinating lives and legacies of these “desert divas” on this tour.

**Desert Divas**  
CRIZMAC Travel Adventures



Journeys  
of Art  
and Soul



### ► Daily Itinerary

Included meals in parentheses:

**B**=Breakfast, **D**=Dinner

#### Friday, June 25: Arrival and Orientation

Upon arrival in the beautiful city of Santa Fe, New Mexico, check into the charming and comfortable Inn of the Governors. Our hotel is well located, within walking distance to the central historic plaza, the O’Keeffe Museum, galleries, restaurants, and incredible shopping. If your schedule permits, take some time this afternoon to stroll around and familiarize yourself with “everybody’s favorite city different.”

This evening you will be met in the hotel lobby by Stevie Mack and Kitty Williams and escorted to a welcome dinner and orientation to the seminar. Handouts and resources will be distributed for your use during the week. **(D)**

#### Saturday, June 26: Opening Lecture, Wheelwright Museum and Museum Hill

After a great breakfast at the hotel, we will meet for an opening lecture and presentation introducing the lives and work of our three generous art patrons. Mabel Dodge Luhan, Millicent Rogers and Mary Cabot Wheelwright, each left a legacy to the arts of the southwest that we enjoy today. We will take break for lunch and a visit to the plaza where you will have time to enjoy a local restaurant and familiarize yourself with the area.

After lunch we will reconvene for a tour of the Wheelwright Museum and the famous Case Trading Post located on site. The remaining afternoon offers you free time to use the pass provided to visit the fabulous museums on Museum Hill or to savor the amenities of Santa Fe as you wish. **(B)**

#### Sunday, June 27: Taos, Los Gallos and the Millicent Rogers Museum

We’ll set out immediately after breakfast for Taos, where our first stop will be Los Gallos, the house where Mabel Dodge Luhan and her husband Tony hosted so many artists, writers, and other notables. After a tour of the home, you’ll have time to explore the charming central plaza of Taos during a long lunch break. We’ll end the afternoon at the Millicent Rogers Museum where you’ll have an opportunity to view works by Maria Martinez and members of her family, along with many other famed Native American artists. We’ll depart in the late afternoon for our return to Santa Fe. **(B)**

#### Monday, June 28: Lecture and O’Keeffe Museum

Following breakfast you will enjoy an introduction to our three artist divas, Georgia O’Keeffe, Maria Martinez, and Roxanne Swentzell, to prepare you for the coming activities. We’ll spend the afternoon at the O’Keeffe Museum viewing the exhibition titled, *Abstraction*. Several American museums collaborated to create this exhibition, which highlights O’Keeffe’s abstract work over the course of her career. **(B)**

### Daily Itinerary Continued...

#### Tuesday, June 29: Ghost Ranch and Abiquiu

After a hearty breakfast at the hotel, we'll depart Santa Fe for O'Keeffe country. On our travels, we'll encounter the vast sky and open landscape that so inspired the artist. Our first stop is Ghost Ranch, a place where O'Keeffe spent a great deal of time. We'll take time to visit the ranch and photograph the same mountains and vistas that haunted her. The charming Abiquiu Inn is our next stop and the designated rendezvous location for tours of O'Keeffe's home. These special tours are limited to twelve people at a time. Since we will need to divide the group for the tours, you'll have time to enjoy lunch on your own at the Inn's excellent restaurant and explore their beautiful grounds. We'll return to Santa Fe in the late afternoon. (B)

#### Wednesday, June 30: Roxanne Swentzell's Tower Gallery and San Ildefonso Pueblo

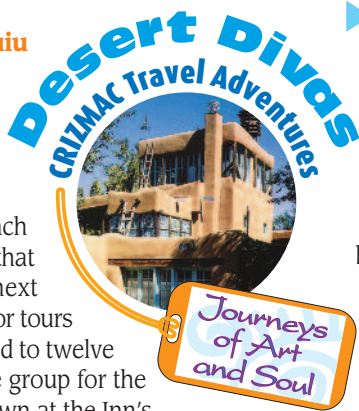
Following another delicious breakfast at the hotel, we'll head north to Pojoaque and the Poeh Center. Established in 1988, the Center emphasizes the arts and cultures of all Pueblo People with a focus on the Tewa-speaking Pueblos. We'll tour the Center, followed by a visit to contemporary sculptor, Roxanne Swentzell's Tower Gallery. After lunch at a nearby restaurant, we'll travel to the San Ildefonso Pueblo. The pueblo was home to the noted potter, Maria Martinez, who was credited with the re-discovery of the black-on-black pottery technique. We'll visit the Pueblo Museum and have a demonstration by contemporary potters still working in the technique popularized by Martinez. A farewell dinner will follow our return to Santa Fe. (B, D)

#### Thursday, July 1: Tour Concludes

We'll depart Santa Fe with many fond memories, photographs, and treasures from the southwest. (B, flight time permitting)

### ► Your Journey Includes

- Six nights at the Inn of the Governors in Santa Fe
- Daily breakfast and two dinners
- Transportation to tour events
- Private tour of the O'Keeffe Home in Abiquiu
- Tour of Mable Dodge Luhan's house in Taos
- Tours of O'Keeffe, Wheelwright and Millicent Rogers Museums
- Pass to New Mexico State Museums and site admissions
- Guides, lectures, and presentations
- Server tips for group meals
- Seminar handbook
- Cost based on double occupancy rooms, single rooms available for an additional fee
- AIRFARE NOT INCLUDED



### ► Important Information

Every effort will be made to carry out all activities as planned and advertised; however, CRIZMAC and the seminar leaders reserve the right to make any alterations, deletions, or modifications to the itinerary and/or accommodations deemed necessary due to circumstances beyond their control.

#### Payment Deadlines

Enrollment will be made on a "first-come, first-served" basis. A \$500 deposit is required to guarantee your space. **Register by March 24, 2010 and receive a \$50 gift certificate for CRIZMAC merchandise.** Gift certificates will be included with your final tour documents. **Final payment is due on or before April 25, 2010.** Registration and deposit payments may be made by phone, mail, or online at [www.crizmac.com](http://www.crizmac.com).

#### Cancellations and Refunds

Cancellations must be received in writing. Participants who cancel on or before May 14, 2010 will receive a full refund **less a \$150 processing fee. If cancellation is made after that date, no refund is given.** CRIZMAC will make every effort to operate the tour. In the event CRIZMAC must cancel, participants will receive a full refund of all tour fees; however, CRIZMAC is not responsible for losses due to non-refundable airline tickets or other travel arrangements. **Travel insurance, available from CRIZMAC or your travel agent, is highly recommended.**

#### Professional Development

Educators receive a certificate for 48 hours of professional development credit. Graduate credit is available through the University of Arizona for an additional fee.



**\$1695**  
Per Person

► **Register Today: [www.crizmac.com](http://www.crizmac.com)  
1-800-913-8555 or (520) 323-8555**

#### ► Price

\$1,695 per person, double occupancy.  
Single supplement: \$625.

**CRIZMAC Marketplace** • 1642 N. Alvernon Way • Tucson, AZ 85712

Mailing Address: CRIZMAC Art and Cultural Education Materials, Inc. • P.O. Box 65928 • Tucson, AZ 85728-5928